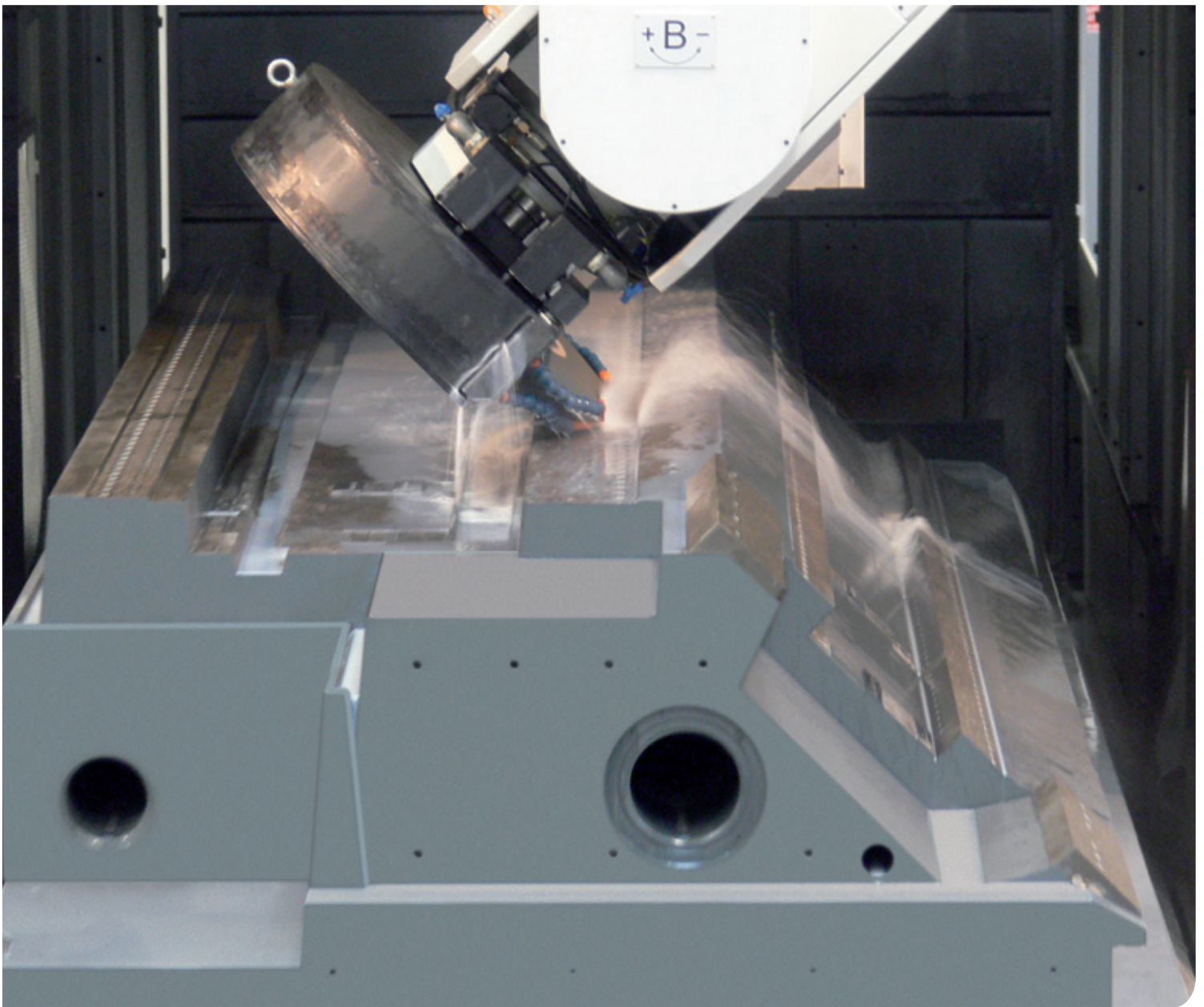


## EPUGRIND – Precision Grinding

Precision grinding and services for high-precision components for tool, plant and machine engineering



**EPUCRET**<sup>®</sup>  
discover the future

## EPUGRIND – integral services for high-precision machine components



# EPUGRIND – precision grinding

With its own precision grinding centre, EPUCRET offers an integral service concept for high-precision machine components. This innovative all-round service encompasses all the important steps towards a complete solution – from technical and design-related advice through grinding to measurement, calibration and assembly.

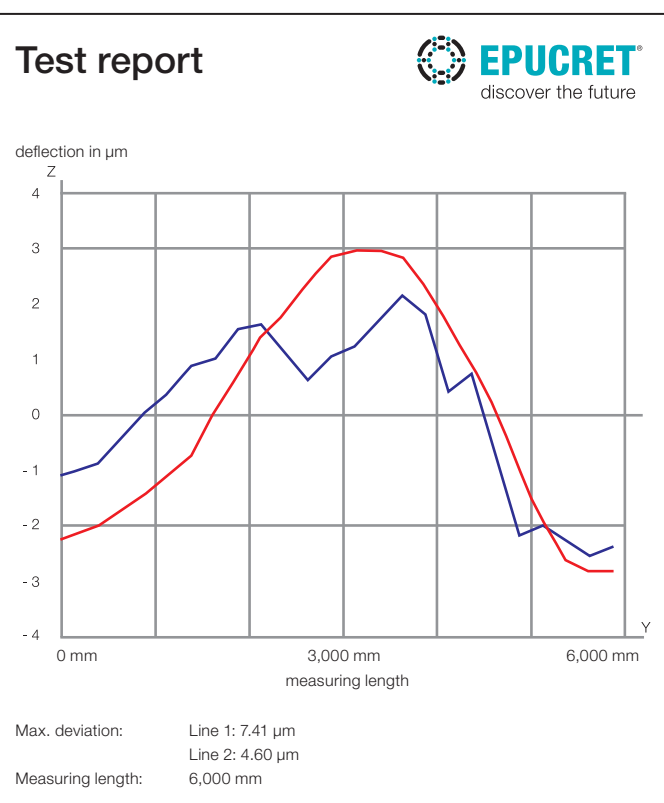
**The result: High-precision machine components and satisfied customers!**

## Your benefits

- » **Complete service** taking in design and production of the raw component, through machining, measurement, module assembly and joining
- » **Competent advice** on material choices and design for optimized grinding
- » **High-precision machining** of complex machine components made of mineral casting, hard stone, steel, cast iron and ceramic
- » **Modern machine outfit** for workpieces up to sizes of 7,000 x 2,650 x 2,000 mm (LxWxH) and weights of up to 25,000 kg. The machines are equipped with universal grinding support +/- 90 rotatable /division 1°, NC/CNC control Sinumerik 840D, angle- as well as convex- / concave grinding equipment and automatic balancing and truing device
- » **Fully air conditioned** production, assembly and measurement rooms (20° +/- 1K) for optimum production conditions and maximum precision
- » **Short delivery times due to reliable grinding capacities:** Production, testing and logistical processes are ideally planned, controlled and monitored on the basis of a modern manufacturing requirements planning (MRP) system.
- » **Optimum product quality** based on ISO 9001:2008



High-performance machine outfit and qualified workforce for high-precision machine components



Precision in the micron range: Straightness measurement with autocollimator

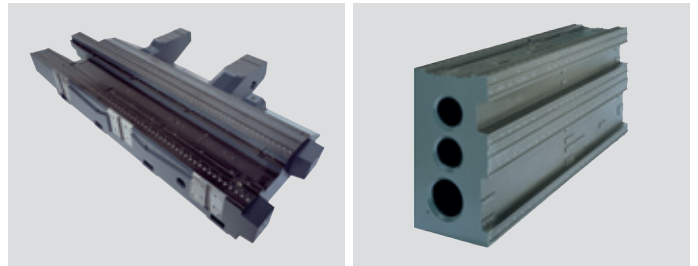
# Precision grinding of all materials

By offering a complete precision grinding-related service, EPUCRET is able to address the ever more stringent demands placed on the contract machining and assembly of high-precision machine components. **We offer extensive expertise in the machining of wide-ranging different materials such as mineral casting, hard stone, ceramic, steel and cast iron.**

## Our complete service for high-precision machine components

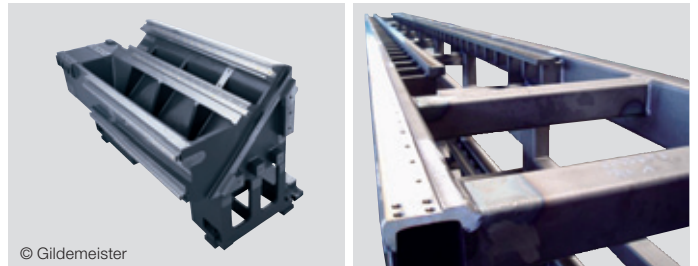
### Machine beds and frames in **mineral casting**

Manufacture and precision grinding of vibration-damping machine beds and frame components made of mineral casting. Creation of system solutions through subsequent assembly, joining and testing processes.



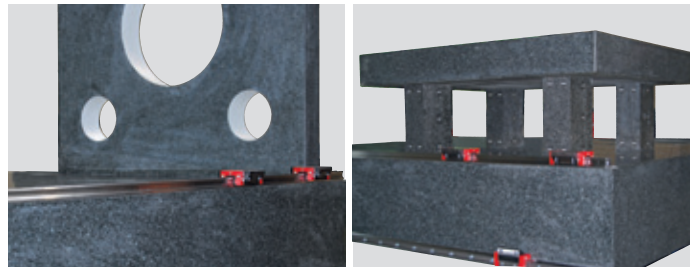
### Machine components in **steel and cast iron**

Flat and guide way grinding of metallic machine components using different alloys, quenching and tempering processes, degrees of hardness and coatings. Reconditioning or reworking large components.



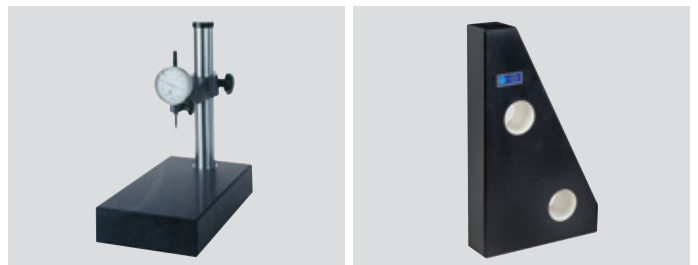
### Special designs in **hard stone**

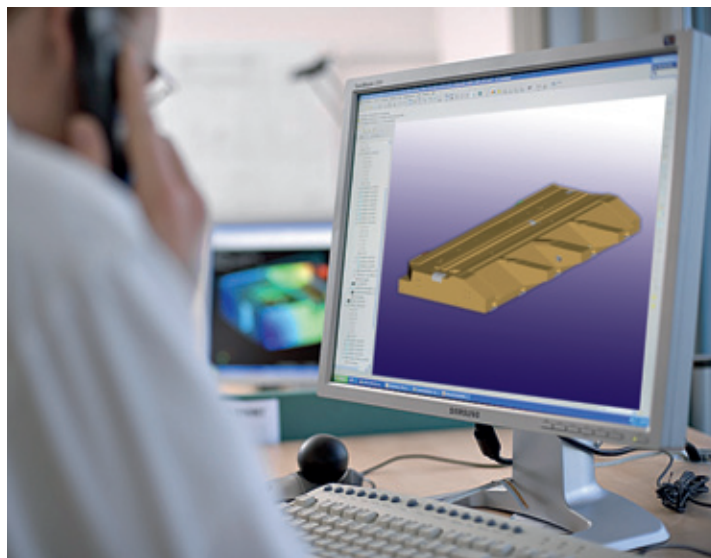
Integral manufacture of high-precision assemblies for gauge and special-purpose machine engineering made of hard stone, inclusive of joining (gluing, screwing) and precision assembly of attachments.



### Measuring devices, standards, gauges, fixtures

Complete production of measuring plates, -angles, beams and frames, precision measurement tables, test frames and standards made of hard stone to customer specification as well as calibration and adjustment of your measuring device with documentary evidence.





## Advice & engineering

A team of highly qualified experts is at your services to act as development partners. With the aid of high-performance 3D CAD systems we will create technically mature, economical solutions tailored to your precise requirements. From designs specifically optimized for grinding through FEM calculation, precision strategy, tool development and production to initial prototypes and feasibility studies, EPUCRET provides a sound, one-stop solution to all your needs.

## Production & manufacture

### » Grinding

In our fully air conditioned production hall, precision flat grinding machines are on hand for machining large-volume machine components made of mineral casting, hard stone and metallic materials in dimensions of up to 7,000 x 2,650 x 2,000 mm and weights of up to 25,000 kg.

### » Lapping

Compliance with the stringent surface roughness and precision requirements imposed on surfaces is achieved by means of manual lapping.

### » Measurement

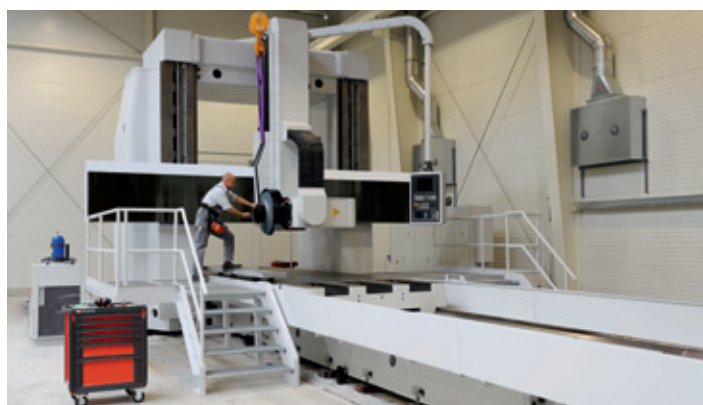
Precision in the micron range is documented with extreme accuracy at our fully air-conditioned measurement workstations by means of autocollimators and electronic inclination scales.

### » Assembly

As a system supplier, we carry out component and module assembly and logging processes in our air conditioned assembly rooms in line with your specifications.

### » Inspection of measuring devices

We offer inspection and reworking services for measurement plates, straightness and angle standards. These services are also available on site depending on the ambient conditions and quality category.



# EPUCRET worldwide.



Version: 7/2010; Errors excepted. Subject to change.

■ **RAMPF Group, Inc.**  
 Wixom, Michigan, USA  
 E [info@rampf-group.com](mailto:info@rampf-group.com)  
[www.rampf-group.com](http://www.rampf-group.com)

■ **RAMPF (Taicang) Co., Ltd.**  
 Taicang, P.R.China  
 E [info@rampf-group.com.cn](mailto:info@rampf-group.com.cn)  
[www.rampf-group.com.cn](http://www.rampf-group.com.cn)

■ **RAMPF Group Japan, K. K.**  
 Osaka, Japan  
 E [info@rampf-group.jp](mailto:info@rampf-group.jp)  
[www.rampf-group.jp](http://www.rampf-group.jp)

## Your contact for precision grinding:

EPUCRET Präzisionsschleifen  
 Im Gründchen 1  
 D-63856 Bessenbach  
 T +49.71 61.9 58 89-0  
 F +49.71 61.9 58 89-29  
 E [info@epucret.de](mailto:info@epucret.de)  
[www.praezisions-schleifen.de](http://www.praezisions-schleifen.de)

Headquarters  
**EPUCRET Mineralgusstechnik GmbH & Co. KG**  
 Daimlerstraße 18-26  
 D-73117 Wangen bei Göppingen

T +49.71 61.9 58 89-0  
 F +49.71 61.9 58 89-29  
 E [info@epucret.de](mailto:info@epucret.de)  
[www.epucret.de](http://www.epucret.de)

